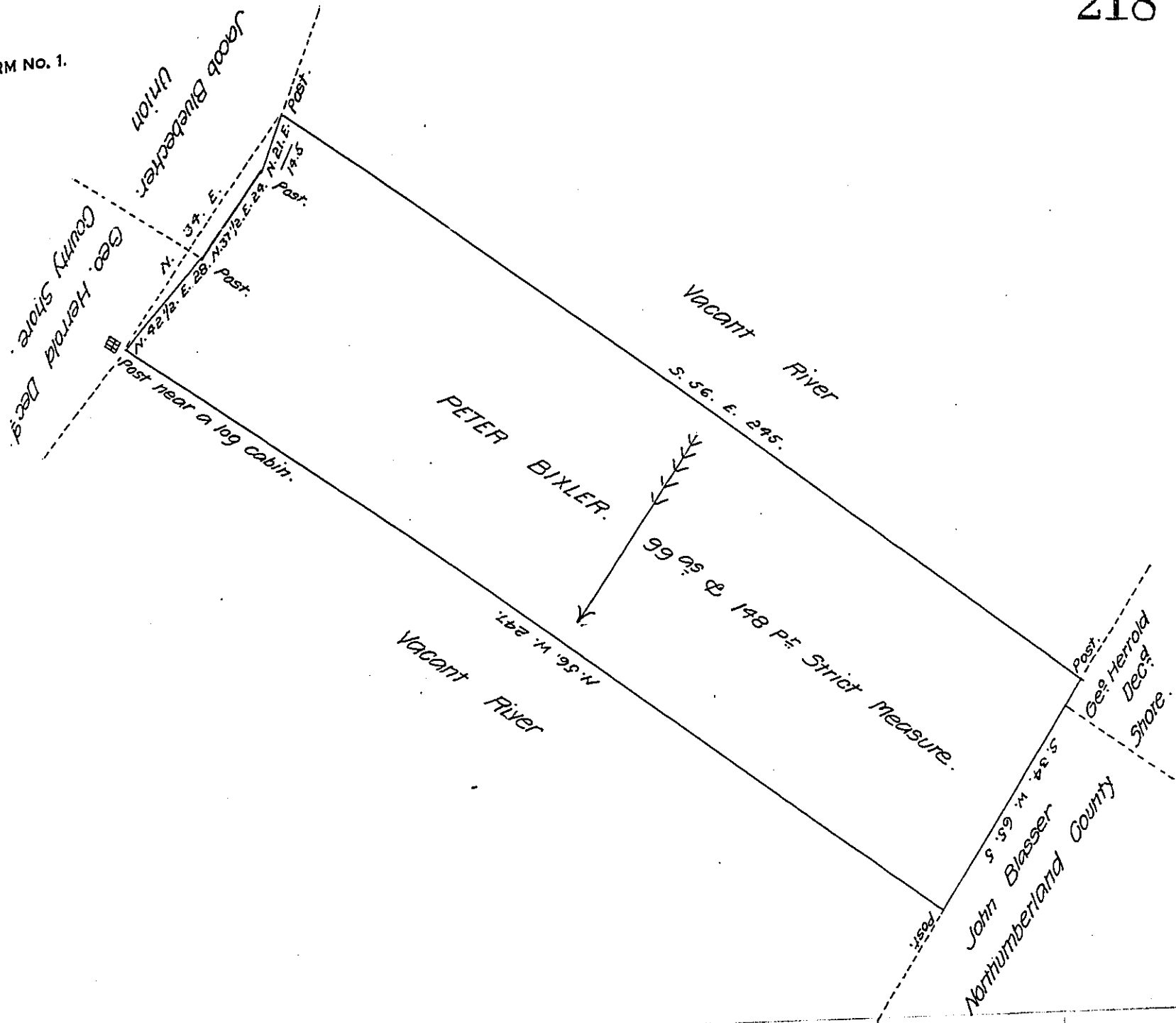


FORM NO. 1.



Situate on the bed of the Susquehanna River in Lower Mahanoy Township
 Northumberland County containing ninety nine acres & one hundred and forty
 eight perches Strict Measure Surveyed unto Peter Bixler the 5th day of October
 1848 by virtue of his Warrant dated the 22nd day of September 1848

Ab^t Shipman D. S.

To John Laporte Esq
 Surveyor General.

P.S. The Strait dated line on the Union County Shore N. 34. E. is from when the
 right angle was taken as there is a Curve in the river at that place.

A. S. D. S.

IN TESTIMONY that the above is a copy of the original remaining on file in
 the Department of Internal Affairs of Pennsylvania, made
 conformably to an Act of Assembly approved the 16th day of
 February 1833, I have hereunto set my hand and caused
 the Seal of said Department to be affixed at Harrisburg,
 this twentieth day of February 1908.

Henry Hoover
 Secretary of Internal Affairs.